

INDFAB PROJECTS

SSI Engineering Firm for supply of spare parts, ancillary to NALCO



Marketing of industrial products .



Hotel at Jharsuguda, Odisha. Restaurant chain

CORPORATE OFFICE

Mr. Prabhat Palit
Managing Director
Email – prabhat.palit@indfab.in

Mr. Ashis Palit
Director
Email – ashis.palit@indfab.in

CONTACT US

Mr. Nrusingha Das
AGM (Contracts)
Email – nrusingha.das@indfab.in

MANUFACTURING

Mr. Kaushik Palit
Email – kaushik.palit@indfab.in

PROJECTS

Mr. Ashok Kumar Das
Construction Manager
Email - ashok.das@indfab.in

STRUCTURAL

Mr. Bidyut Sarkar
Deputy General Manager – Project
Email - bidyut.sarkar@indfab.in

MATERIAL TESTING

Mr. Sujit Kumar Mahato
Email - sujitkumar.mahato@indfab.in

STRUCTURAL

Design & Engineering
Mr. Sanjay Kumar Behera
Email – sanjay.behera@indfab.in

www.indfab.in



INDFAB PROJECTS

Construction • Manufacturing



Work hard and get lucky

The year 2010 saw us whiz past the twenty five years mile stone. As we look back in 2013 - the twenty eight years have seen us working hard and executing a staggering one lac fifty thousand MT of steelwork, eighty thousand MT of aluminium busbar, two hundred kilometers of pipelines, erecting more than one hundred pot tending machines for Aluminium smelters, and a broad spectrum of equipment packages, process lines we have grown from very roots and could spread our wings to become a full fledged construction , manufacturing ,equipment trading and hospitality group. We are lucky to be in the list of preferred vendors of many Customers.



The team

The company relies heavily on a team of entrepreneur Managers who have been the sole catalysts of its growth program. They spearhead its profit centers. An unflinching commitment and capacity to rally back after learning from mistakes have been their greatest strength. Most of them have trodden the roller coaster path of the company for the last twenty eight years.



Promoters

A sixteen years stint in steel plant projects of Bokaro Steel, Durgapur Steel, Kuremukh Iron Ore and IISCO, shaped a dream of Techno entrepreneur Prabhat Palit when INDFAB was promoted in the year 1985.

The vision was to establish an engineering company with inclusive growth-a comprehensive one stop project shop catering to construction, engineering, process plant spare parts, manufacturing and supply, material testing lab, skill training and trading partner of reputed OEMs.

In this family owned business, two other Promoters Kalyan Palit and Ashis Palit have worked closely for the last twenty eight years contributing towards growth, consolidating in different functional areas, diversification programs and customer relation.

Next gen entrepreneur Kaushik Palit is being groomed to fit into the saddle of entrepreneurship in this family owned business.

Steel work



Steelwork is the backbone around which all projects build up. Indfab was initiated into construction field through an order of structural fabrication and erection of TG building structures at Captive power plant of NALCO. Conveyor galleries, silo top structures, pipe racks, duct work followed. Our steelwork experience was further strengthened at NTPC, Kanhia stage -I and stage -II, when we executed bunker bay structures, CHP structures, bunker beams, hopper walls.

An organic growth in steelwork execution occurred, when Indfab Projects as an associate of CAITC China carried out the work of assembly, erection of one lac twentyfive thousand MT of electrolytic Pot shells and pot super structures for Aluminium Smelters project of Vedanta. We also executed the work of fabrication, erection of pot cells and super structures at NALCO, BALCO, and HINDALCO.

Over the last twenty eight years we have executed approximately twenty thousand MT of building structures and one lac twentyfive thousand MT of technological structures.

Apart from working as Direct vendor of M/S NALCO, M/S VEDANTA, M/S HINDALCO, the company has worked as sub vendor under reputed construction companies like Bridge and Roof, HSCL, PCP, McNally Bharat, BST Engineering in the field of structural steel work





Equipment Erection

The company undertakes total equipment erection packages involving mechanical, electrical & instrumentation work and have successfully executed EOT cranes, process cranes, casting lines, material handling systems, process plants like rodding shop, anode handling system, transfer gantry pumps, pot & compressors, furnaces, conveyor lines, process plants. We have erected more than one hundred pot tending machines and thirty furnace tending assembly for Aluminium smelters.



As Indian associates of MNCs, the company handles port clearance, inland transportation, site storage, site infrastructure development, mechanical, electrical, instrumentation installation and commissioning assistance.



Manufacturing



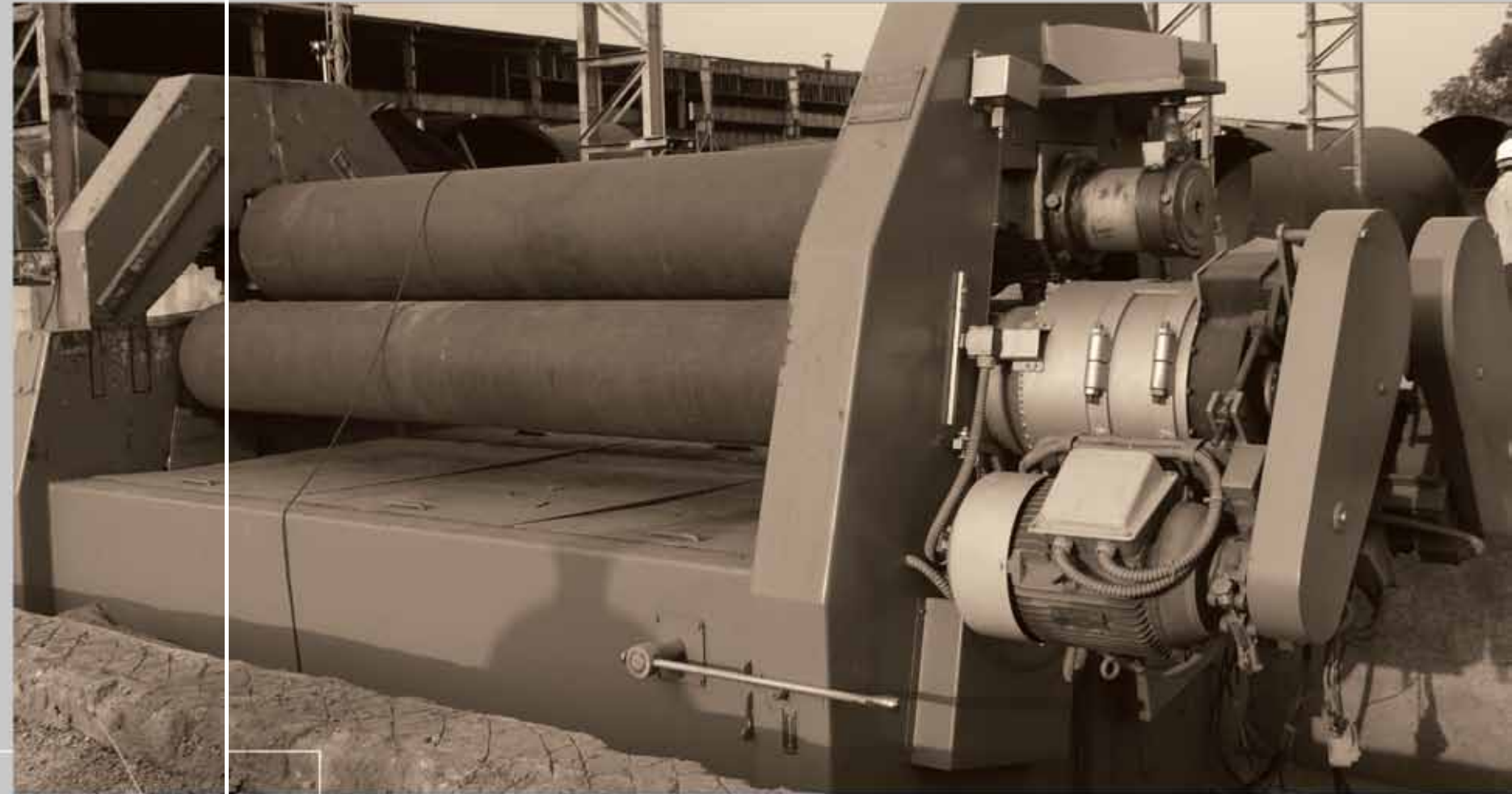
The company has a modern manufacturing base near Angul on eight acres of land adjacent to NH 42 for supply of structural steel work, ducts, silos, storage hoppers, technological and equipment structures. The manufacturing facility has CNC flame cutting machine, column & boom welding facility, SAW welding, MIG welding, shot blasting and painting facility, stress relieving furnace and material testing lab, in house engineering & detailing facility and have supplied to ESSAR, Petron, HDOL, HINDALCO, LANCO & GMR.

Sister unit INDFAB is an ancillary unit to NALCO and has been supplying maintenance spare and project components to steel, power and aluminium sectors on a regular basis from its well established machine shops.

Planning, engineering and procurement

Our design and engineering is equipped with auto cad detailing facility. We undertake digitization of engineering drawings, product development, developing manufacturing drawings for equipment components from which drawings are not available. The procurement cell is well experienced in locating raw materials and equipment components for our projects involving supply.

Planning cell prepare schedules as per customer requirement. Monitoring of delivery schedule is carried out on daily basis and daily progress report is sent to customer.

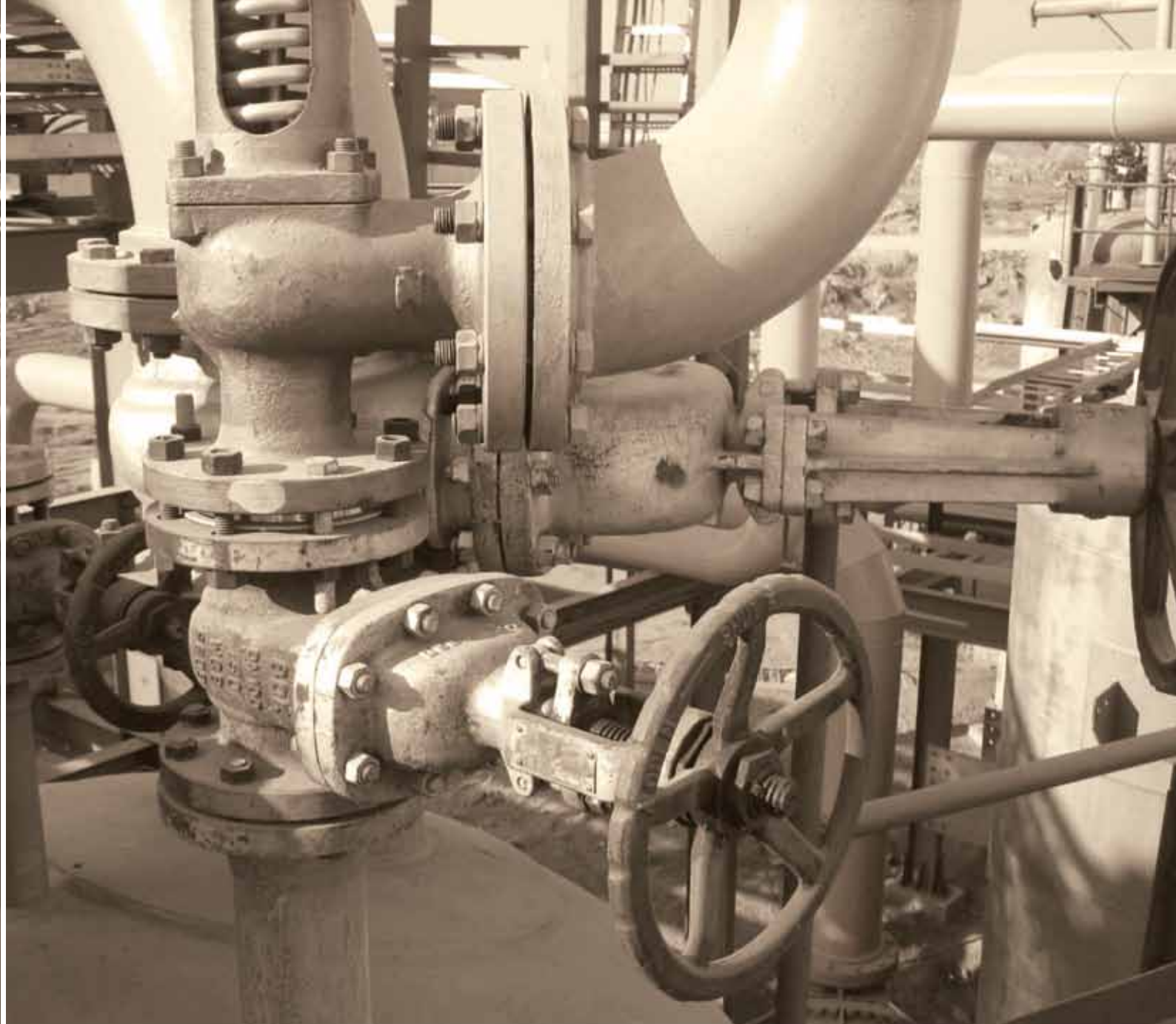




Plant piping

We have executed supply, fabrication, erection of complete plant piping from 50 NB to 300 NB including supply of valves and fittings. The pipe work includes plant Air-Piping, Fuel-Oil Piping, Water Piping, Drinking Water Lines and Fire Hydrants. This job has provided us with experience of Rack Piping, Above Ground Piping and Under Ground Piping. We have executed Unit Piping work in Compressor House, Pump House and Process Lines.

For supply of pipe lines, valves and fittings, we carry out vendor evaluation as per PR (Purchase Requisition) document of customer.



We provide requisite technical, commercial and dispatch documents and arrange all test certificates for the products. We have fully experienced fabrication & erection and inspection team for pipelines. All quality related documents like QAP, PQR, WPQR are generated by our Quality team. After installation and hydro-testing, we provide isometric drawings for the pipe work.

We have executed approximately 100 km of plant piping. We have executed Stainless steel piping for Induction furnace. IBR piping work has also been executed by us.

Quality , Inspection & Integrated Management system

The company has an Inspection department with level -II Inspectors. For each job QAP , PQR, WPQR is prepared .During fabrication, stage inspection is carried out. Internal Inspection and documentation for raw material, consumables, fit up, welding, shot blasting, and painting are duly maintained.

The company has worked with reputed inspection agencies like EIL, BHEL, DNV, DCPL, MECON and Foster and Wheeler .

Company has certified IMS system with ISO 9001, ISO 14001 and OHSAS 18001. Quality and HSE audits are carried out by the certification agencies and action taken to close all non conformities .



Aluminium Busbars



Aluminum smelter projects require fabrication and installation of aluminum bus bar network around their electrolytic pot cells. The fabrication job is carried out at a site machine shop. The job involves cutting various heavy rectangular section (ranging from 400 X 200 mm to 200 X 120 mm) by circular saw, band saw.

Assembly of bus bars are carried out by different jigs and fixtures specially made for each type of assembly. Fabricated assemblies are transported with special fixtures and erected around pot cell.

Surface machining of eight meter long anode beams are carried in special purpose plano miller.



We have skilled welders on aluminium welding process.

The job also involves clad welding with temperature regulation.

We have executed approximately eighty thousand MT of aluminum bus bar work at smelter projects of NALCO, BALCO and Vedanta.



Health Safety Environment

All work assignments include specific attention to health, safety and environment concerns. Regular tool box meeting is held. Risk assessment for each job is determined. Safety induction training is arranged for all new employees. All erection tools and tackles are annually tested and calibrated. Safety Officer and safety stewards monitor implementation of safety norms. Medical check up of new employees are mandatory. Safe drinking water is ensured. Wash rooms are maintained properly. Good hygiene at Workers canteen, washing of food plates with hot water is ensured.



ACC



ALSTOM



ESSAR



BALCO Hindalco



Customers

Our relation with our valued customers has always been a step ahead of commercial order. Customers have been our guide, trainer and motivator.